



Austin/Travis County Health and Human Services Department



The role of public health is to:

PROMOTE community-wide wellness,

PREVENT disease, and

PROTECT the community from infectious diseases, environmental hazards, and epidemics

CityMatCH Equity Action Group

Addressing Health Disparities

&

Improving Health Equity

March 30, 2016

Shannon Jones III, Director
Austin/Travis County Health and Human Services



Austin Travis County Health & Human Services

Vision:

Our community will be the healthiest in the nation.

Mission:

To prevent disease, promote health, and protect the well-being of our community.

Core Purpose:

- Promote community-wide wellness, preparedness, and self-sufficiency;
- Prevent illness, injury, and disease; and
- Protect the community from infectious diseases, environmental hazards, and epidemics.



Austin/Travis County Health Status

- **Overall healthier than Texas and the Nation.**
- **Diverse mix of multiple races, cultures and ethnicities and is experiencing rapid growth.**
- **Significant disparities exist.**
- **Geographic concentrations of vulnerable populations are changing.**
- **East Travis County:**
 - More poverty
 - Lack of education
 - More uninsured
 - Greater concentration of Hispanics and African American



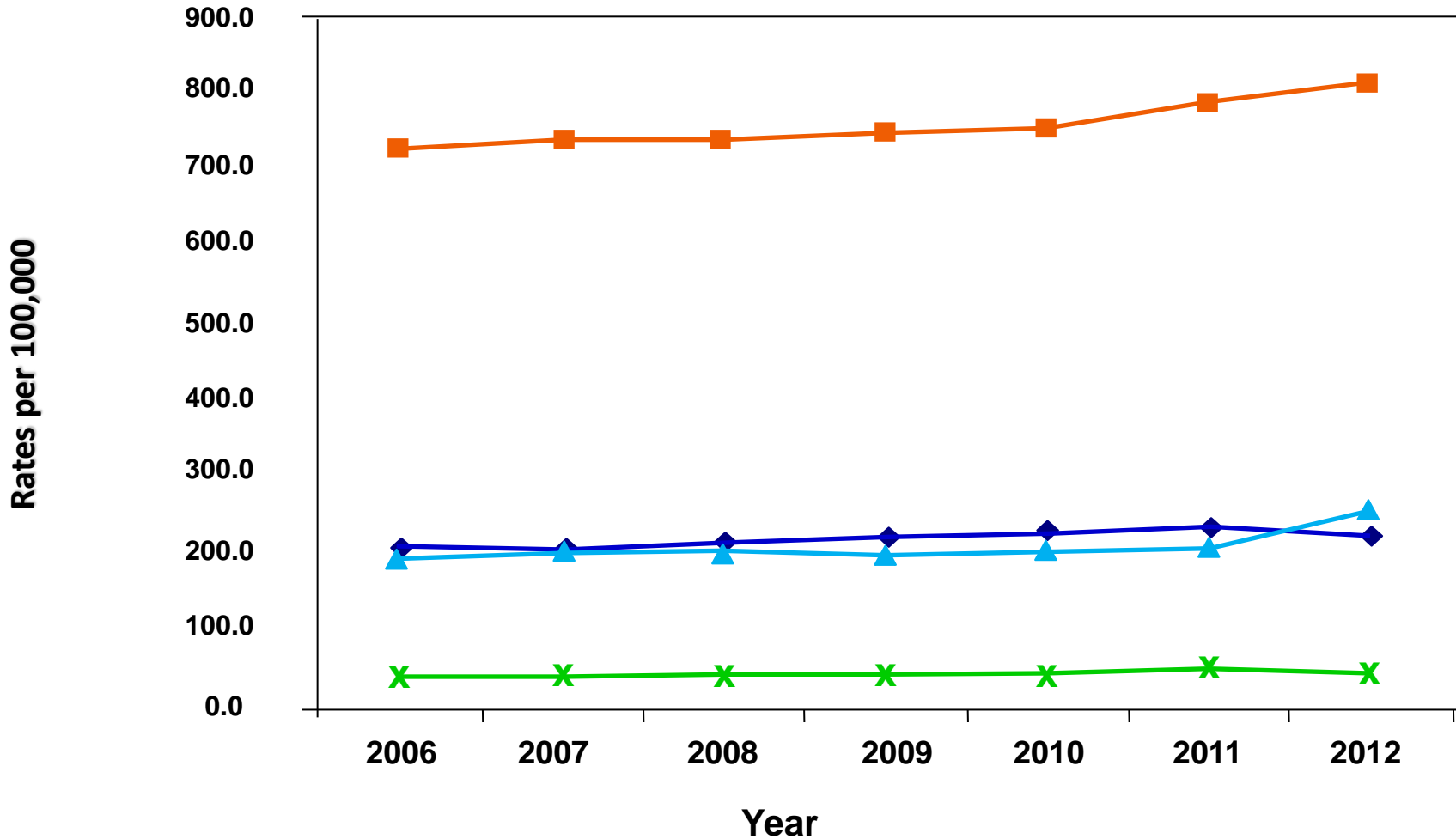
Data Trends

In Travis County Persons of Color are experiencing disproportionately higher rates of....

- HIV/AIDS
- Teen Pregnancy
- Infant Mortality
- Chronic Diseases such as Cancer, Heart Disease, and Diabetes
- Tobacco use
- Obesity
- Poverty particularly among children and youth
- Gonorrhea
- Limited access to transportation, healthy food and primary and mental health care.



Prevalence Rates for Persons Living with HIV/AIDS by Race/Ethnicity, Austin Transitional Grant Area, 2006 - 2012



■ Black
 ▲ Hispanic
 ◆ White
 ✕ Other

Source: Texas Department of State Health Services, eHARS



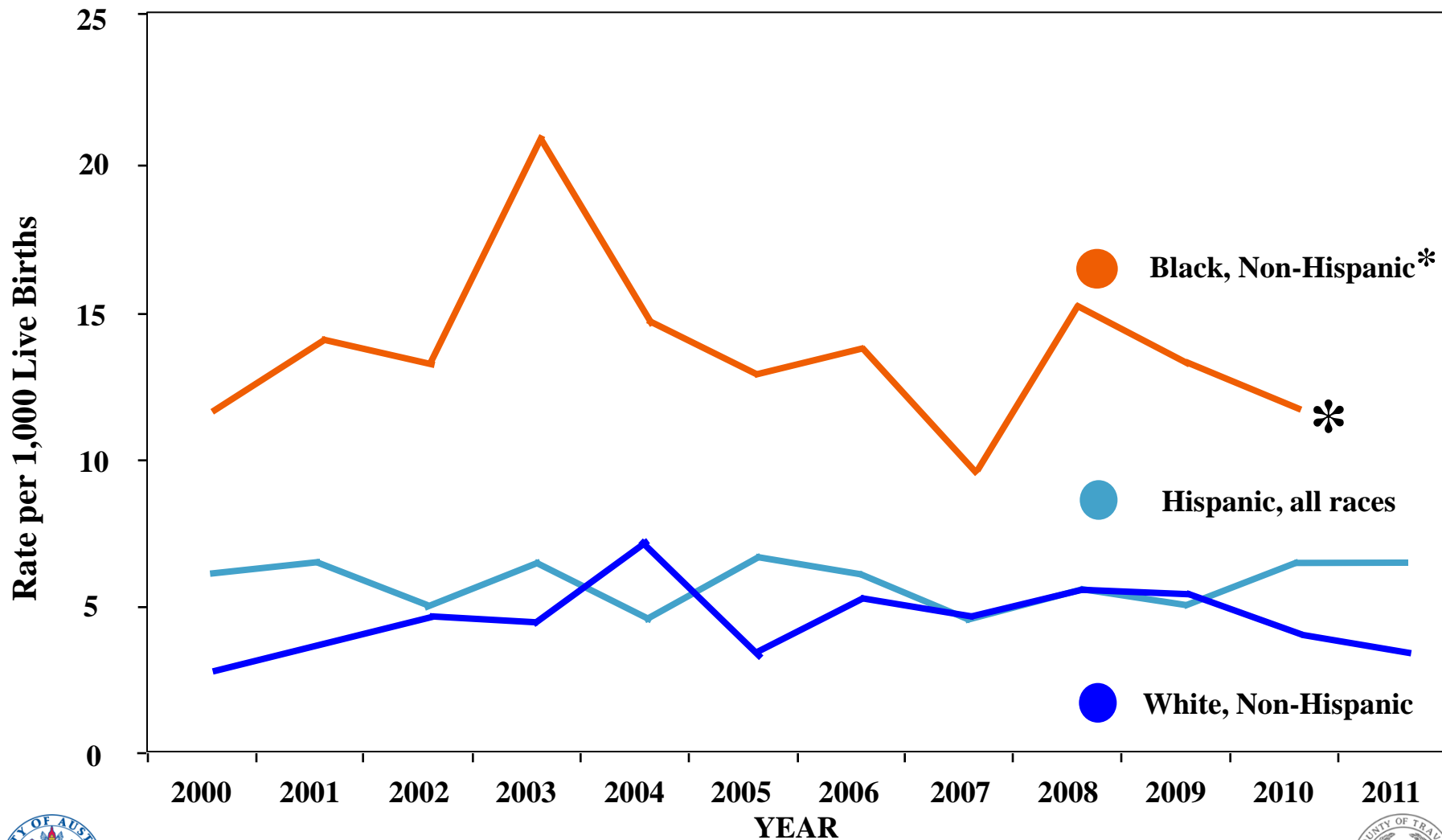
Teen Births, Travis County 2012

Teen Births by Race/Ethnicity, Travis County, 2012			
Race/Ethnicity	Mother's Age		
	14 & Under	15-17	18-19
White, Non-Hispanic	0	34	81
Black, Non-Hispanic	0	34	85
Hispanic	14	322	546
Other/ Multi-Racial	0	0	17
All Races	14	390	729

Source: Texas Department of State Health Services (2014). Austin, TX: Center for Health Statistics

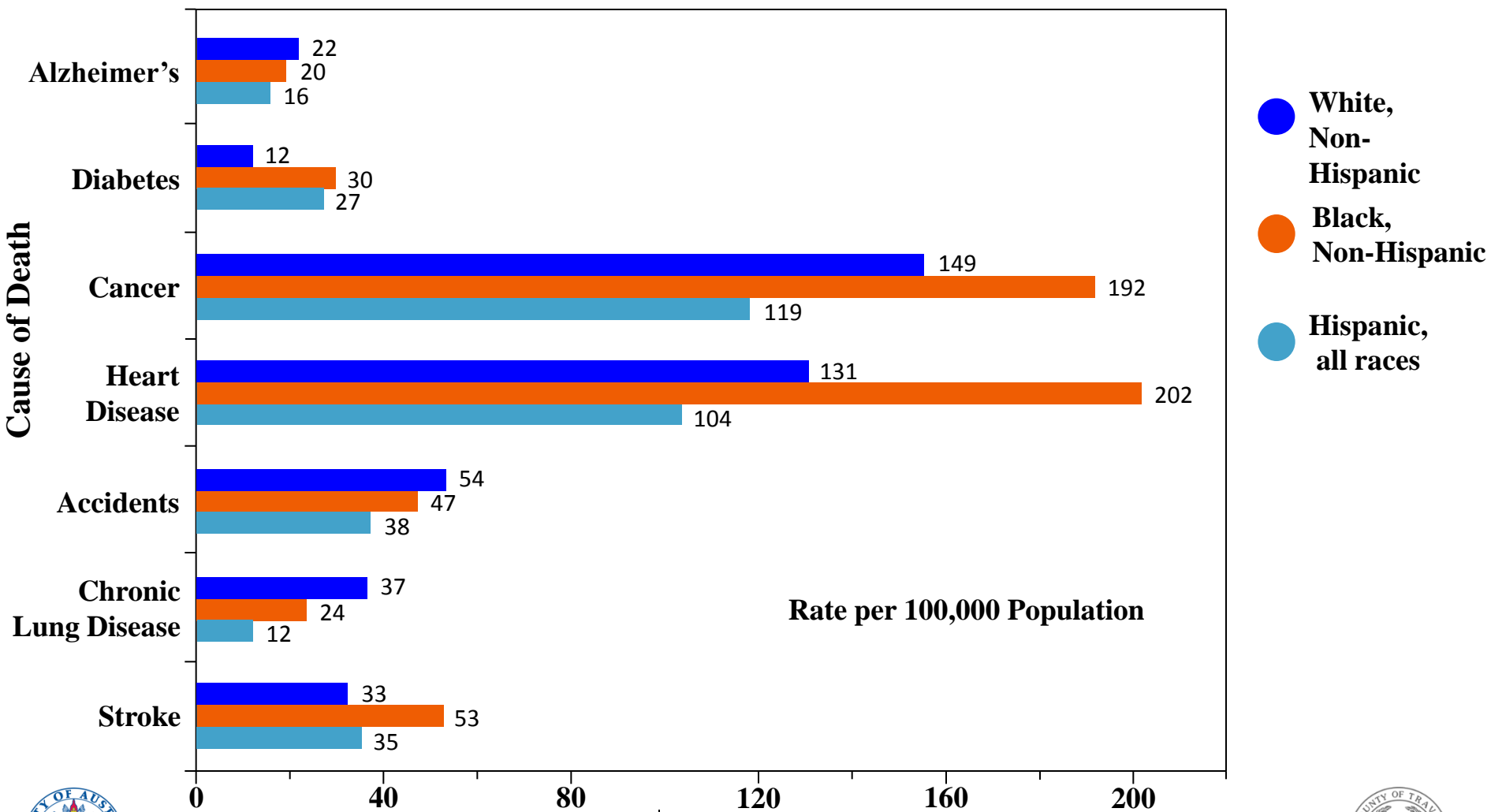


Infant Mortality Rates by Race /Ethnicity for for Travis County, 2000 - 2011

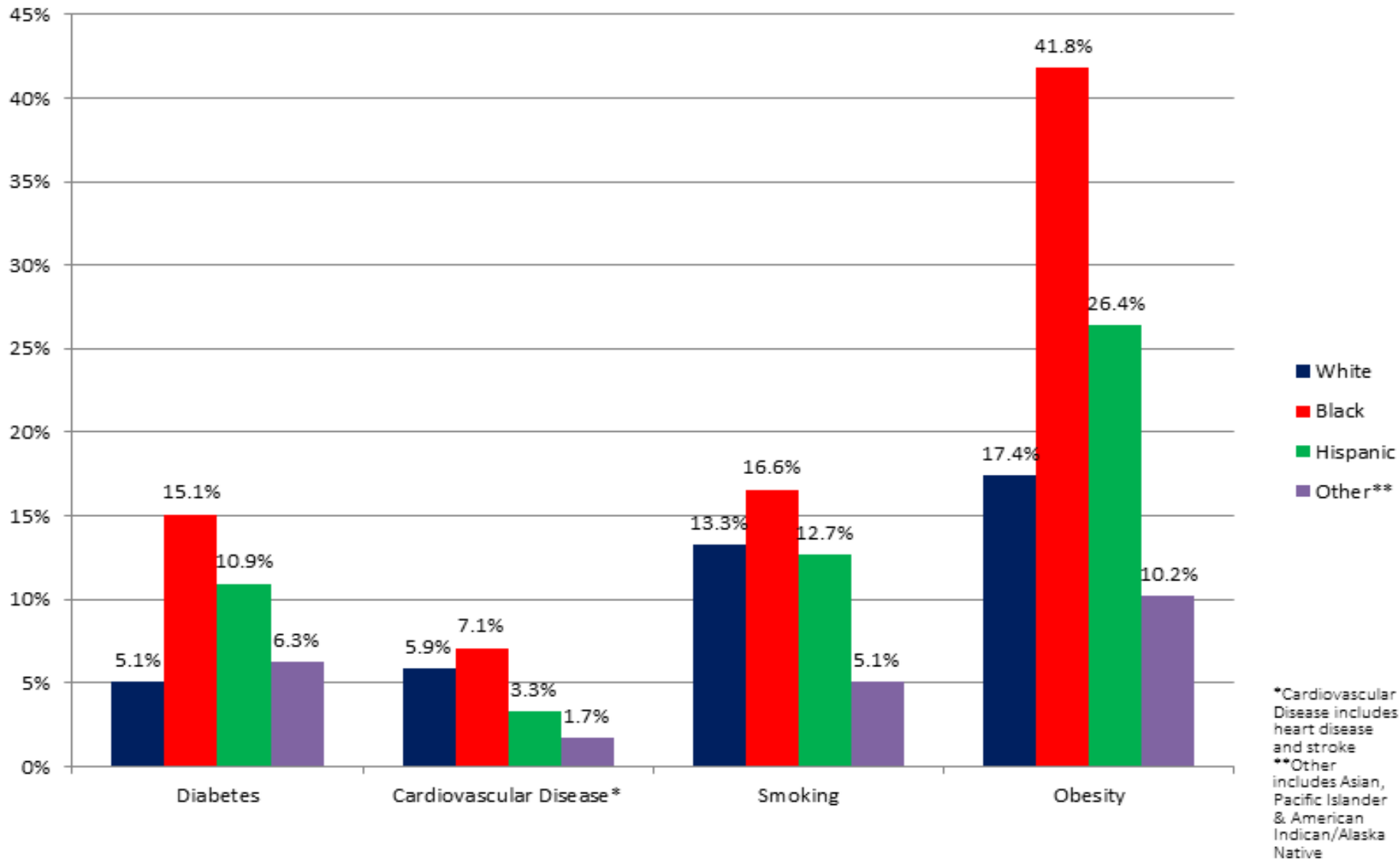


* Due to low number of infant deaths, rates were not calculated for 2011
 Data Source: Center for Health Statistics, Texas Department of State Health Services

Age-Adjusted Mortality Rates for Seven Leading Causes of Death by Race/Ethnicity, Travis County 2011 - 2013



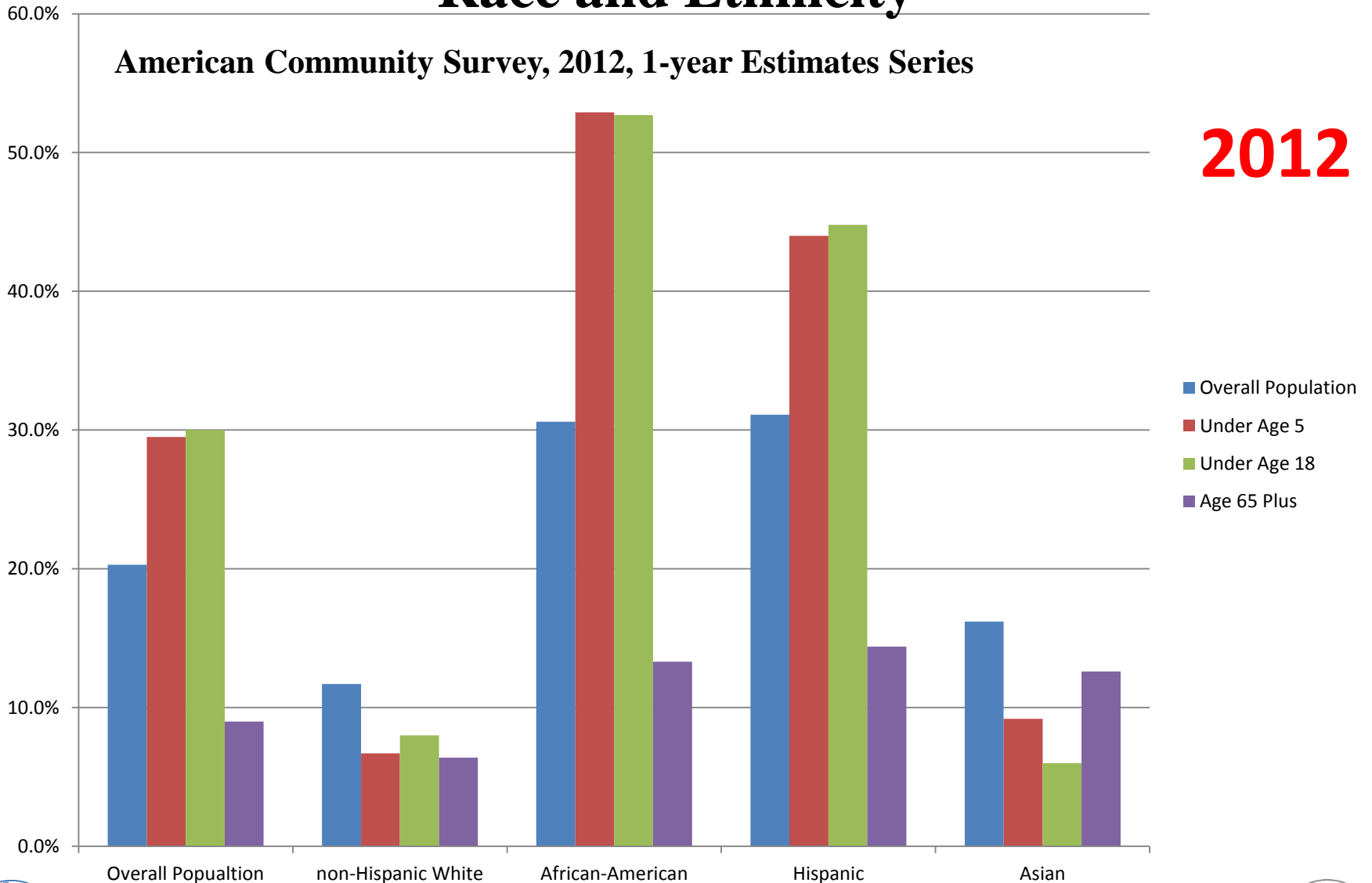
Chronic Disease & Tobacco Use Prevalence by Race/Ethnicity Travis County, 2011-2014



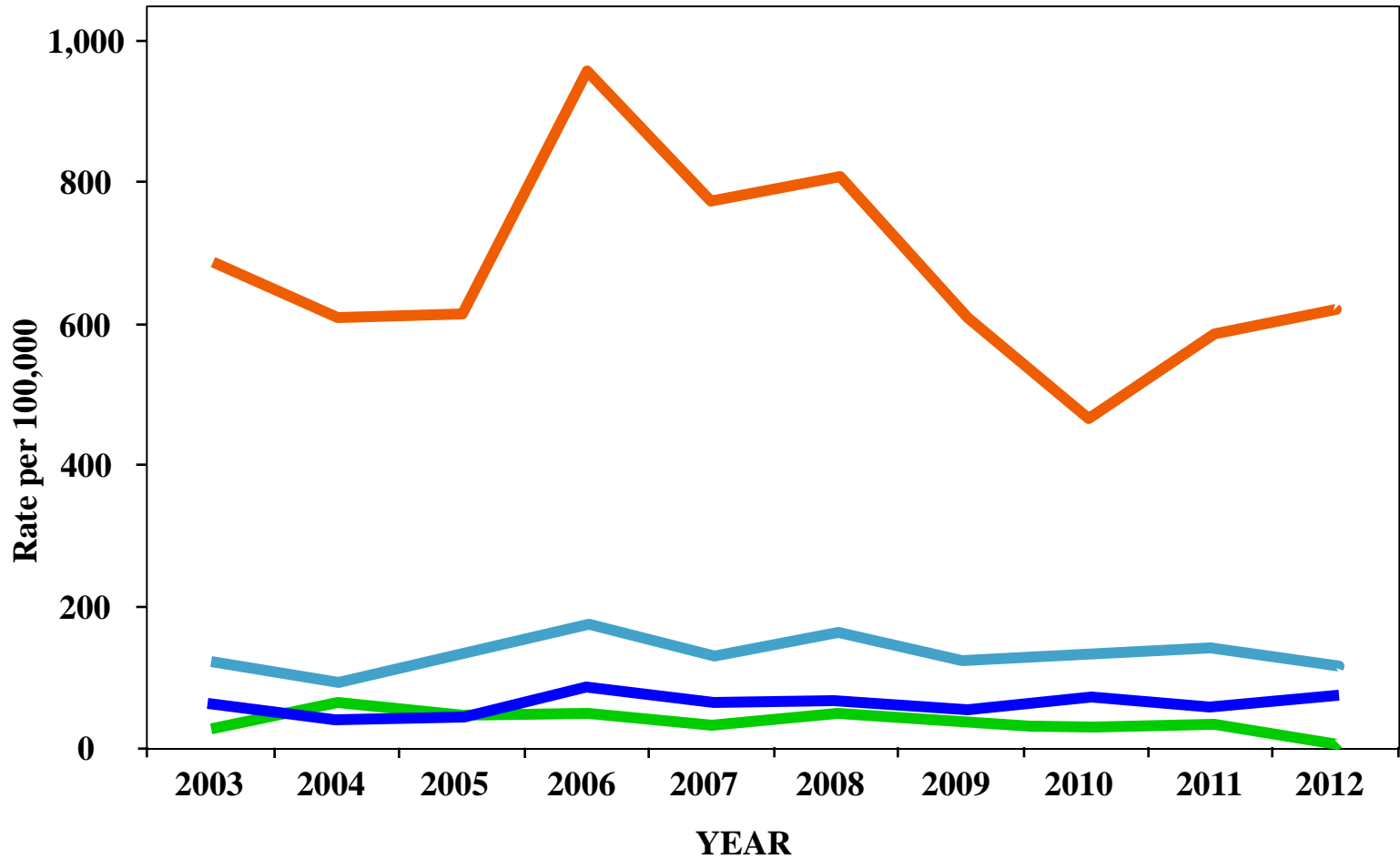
Poverty Rates by Age Group, Race and Ethnicity

American Community Survey, 2012, 1-year Estimates Series

2012



Gonorrhea Incidence Rates by Race/Ethnicity, Travis County, 2003-2012



● Black, non-Hispanic
 ● Hispanic, all races
 ● White, non-Hispanic
 ● Other



Data Source: TB/HIV/STD Epidemiology and Surveillance Branch, Texas Department of State Health Services



2000-2013 Timeline

- 2001--Conference on Health Disparities Among Racial Ethnic Groups in Travis County
- 2003--Town Hall Meeting To Discuss African American Health
- 2005--Conference on Health Disparities Among African Americans in Central Texas (April).
- 2005--Town Hall meeting to develop recommendations to Council City (June).



2000-2013 Timeline

2005 - 9 Community recommendations adopted by City Council resulted in:

- January 2006- New Primary Care Clinic in the African American Community serving 1680 patients
- Created prevention team to focus on improving health status and access to care among African Americans included mobile health van
- Simplified eligibility enrollment process for Medical Assistance Program
- Recruitment of more African American health care providers
- Developed prevention education campaign including KAZI “Health Talk” and “Powered by Me” outreach materials and PSAs
- Added mental health counselor to mobile van prevention team
- Established Community Wellness and Prevention Consortium for community health advocacy-10 churches were recruited
- Adopted a neighborhood-based education screening for preventative health targeting areas of high health disparities



2000-2013 Timeline

- December 2007 - Discussion Group: Strategies for Addressing Prostate Cancer in African American Population partnering with Seton Hospitals System and Prostate Cancer Center
- February 2008 - Mammogram Screening at Booker T Washington Apartments partnering with Travis County Healthcare District
- January 2011 Launched first Community Health Assessment
- June 2013 Began 3 Year Community Health Improvement Plan
Priority Areas:
 - Chronic Disease Focus on Obesity
 - Built Environment Focus on Food Access
 - Built Environment focus on Transportation
 - Access to Healthcare



2015 Health Equity Community Workgroup

- On May 7, 2015 Council passed a two part resolution that requested City Manager to establish a working group to gather information for improving health outcomes for infants, mothers, and other members of the community.
- Community Stakeholder members
 - allgo (LGBTQ community based organization)
 - Alliance for African American Health in Central Texas
 - Immigrant Rights Organizers (members formerly of the Austin Immigrant Rights Coalition)
 - Mama Sana/Vibrant Woman
 - City of Austin Health and Human Services Department staff
- Stakeholders met May-August 2015 (6 plus meetings)
- Developed short term goals
- Developed Community engagement process
- Held 2 community engagement meetings over 100 residents convened to provide input for recommendations.



2015 Health Equity Recommendations

Recommendations for City Council- \$1,050,000 in funding to support:

- **Community based interventions that are**
 - Culturally specific
 - Non-traditional
 - Innovative
 - Focuses on individual/groups that are disproportionately impacted (People of Color, Elderly, Immigrants, LGBT (Lesbian, Gay, Bisexual and Transgender) and Youth.
- **Addressing:**
 - Chronic disease for African American Community (Diabetes, Cardiovascular disease, Sickle Cell Disease & HIV/AIDS)
 - Mental Health Access for Immigrant Communities
 - Maternal and Infant Health for Communities of Color
 - Sexual Health and Wellness (including HIV/AIDS) for LGBTQ Communities of Color



2016 Health Equity Implementation

HHSD Developed Plan to implement new \$1.825 million allocated for social services contracts addressing:

- Homelessness
- Basic Needs
- Behavioral Health
- Workforce Development
- Children and Youth

FY 17 New funding providing support for community based programming addressing health disparities and improving health equity

- Maternal and Infant Health: \$390,000
- African American Health Disparities: \$410,000
- Services for the Elderly: \$50,000
- LGBT People of Color Sexual Health and Wellness: \$100,000
- Immigrant Mental Health: \$100,000

Establish Health Equity Unit -3 new staff were added to establish Health Equity Unit building upon the African American Quality of Life Initiative



Next Steps

- **Develop budget recommendations for FY 17 according to Resolution 20160128-068 -Adopted 1/28/16**
 - \$11,973,307 of additional funding for social service contracts
 - \$10,340,870 of additional funding for the Health and Human Services Department within 2-4 years.
 - 3% annual increase to existing social service and workforce development contracts
 - Annual increase for the HHSD to proportionate to population growth
- **Work with partners and identify data sources to better target health disparities and develop interventions that improve health equity (emergency response call data, AFD, EMS)**
- **Implement Community Health Assessment/Community Health Improvement Plan**
 - Launch 2nd Community Health Assessment January 2017.
- **Conduct performance analysis and develop FY 17 Performance Goals and Outcome Measures**



Questions?

