

# Pregnancy Partners

## A patient navigator solution to improve access to early prenatal care

Clark County, Washington



Marni Storey, Melanie Payne, Doris Sanders  
Clark County Public Health

## Team Members

- Kate Ketcham – NFP Manager
- Janis Koch – Evaluation Manager
- Melanie Payne – Epidemiologist
- Chris Plaster – Admin Assistant
- Doris Sanders – Patient Navigator
- Pat Shaw – PCH Manager
- Marni Storey – Deputy Director

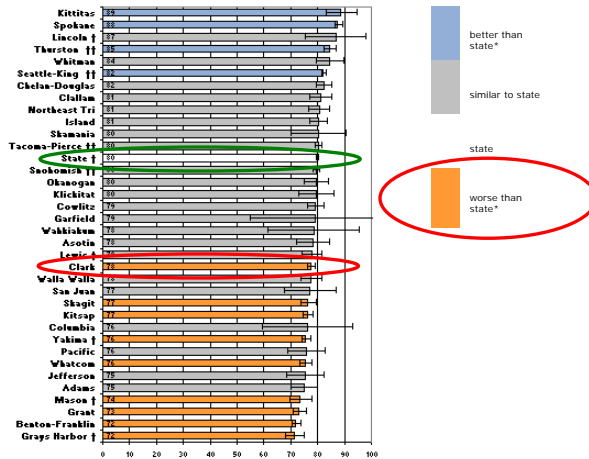
### PREVIOUS MEMBERS

- Robbie Bertram – Outreach Manager
- Colleen Castleberry – Social Worker
- Christina Dahlstrom – MPH Student Intern
- Dolly England – Health Educator
- Kylee Plummer – Nursing Student Intern
- Rinna Rem – Patient Navigator (AmeriCorps)



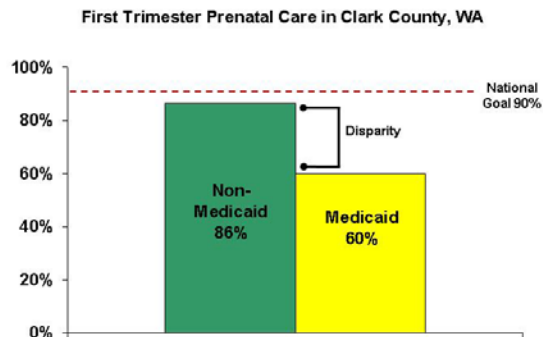
# 2007 WA Local Public Health Indicators

Indicator: First trimester prenatal care (2003-05)

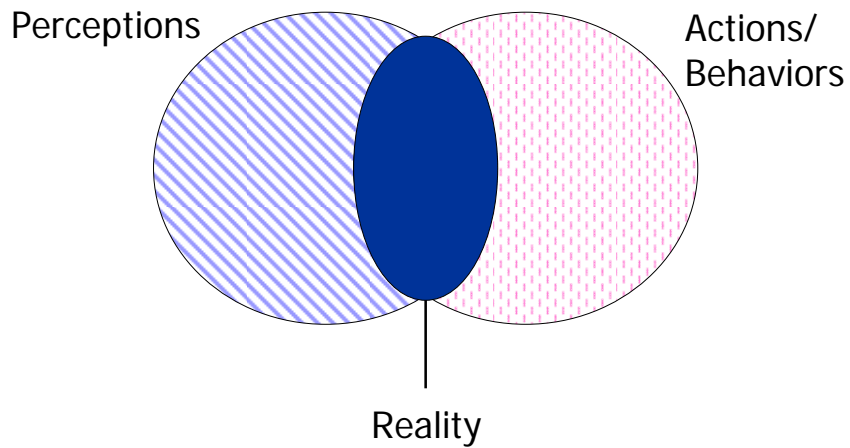


## Project Description

Decrease disparity in receiving 1st trimester prenatal care between Medicaid and non-Medicaid women

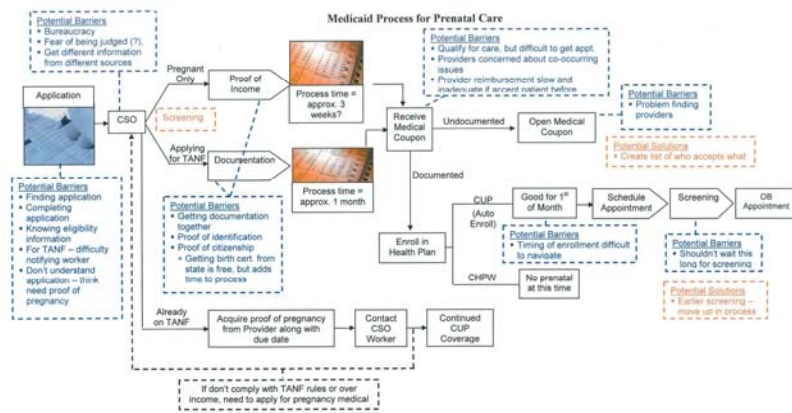


# Identifying Social Determinants of Late Prenatal Care



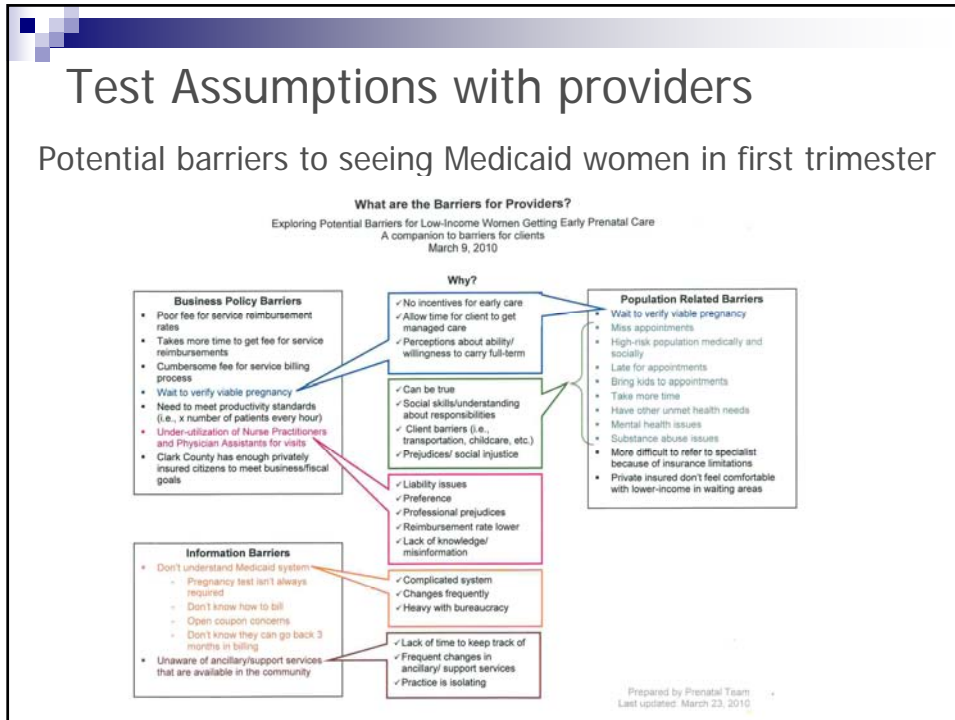
# Medicaid Client Flow Chart

Described prenatal care process



# Test Assumptions with providers

## Potential barriers to seeing Medicaid women in first trimester



# Two Successful Strategies

Pregnancy Resource Guide (tool)

Patient Navigator (system)



Rita the Resource Diva narrates the Pregnancy Resource Guide



## Pregnancy Partners



- Part-time navigator started late 2009
- Works with providers, clinics, and Medicaid office
- Additional prenatal care providers taking fee-for-service Medicaid
- Assists women with referrals for other needed services – food & cash assistance, WIC, mental health, dental care, etc.
- Community funding support for navigator position
- Program monitoring and reporting

## Accomplishments

- Described local barriers for women on Medicaid
- Developed Pregnancy Resource Guide
  - Available in English and Spanish
- Established Patient Navigator
- Additional options for early prenatal care

## Even more accomplishments...

- Maintained funding support from community
- Received March of Dimes grant to expand community navigators
- Selected as 2011 NACCHO Model Practice



## Lessons Learned

### Successes

- Regular meetings of internal, multi-disciplinary team
- Community Stakeholder involvement
- Funding support from community
- AmeriCorps position
- Materials available in English and Spanish
- Visual aids to represent project

### Challenges

- Community-level change takes time
- Challenging to narrow scope from larger project
- Understanding how partners want to be involved
- Grant deliverables differed from community needs
- 2009 H1N1 response slowed project work
- Part time navigator
- AmeriCorps service limited to 10 months



## Contact Information

### Clark County Public Health – Vancouver, Washington

- Marni Storey, Deputy Director
  - 360-397-8434
  - [Marni.storey@clark.wa.gov](mailto:Marni.storey@clark.wa.gov)
- Melanie Payne, Epidemiologist
  - 360-397-8491
  - [Melanie.payne@clark.wa.gov](mailto:Melanie.payne@clark.wa.gov)
- Doris Sanders, Patient Navigator
  - 360-397-8254
  - [Doris.sanders@clark.wa.gov](mailto:Doris.sanders@clark.wa.gov)