



***The Chicago Parenting Initiative
(CPI): How to get Daddy More
Involved***

Access Community Health Network
(ACCESS)

CPI: Project Overview

Lisa Doot Abinoja
MCH Program Manager
Project Director, Healthy Start

Brian Bragg
Program Manager, Men's Health

ACCESS Community Health

- **Background information**

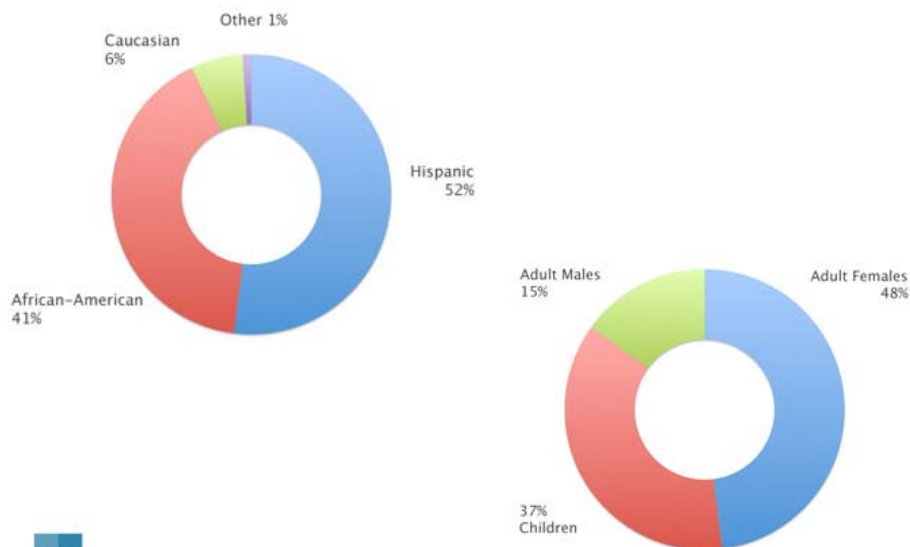
- Access Community Health Network (ACCESS) offers outstanding primary and preventive care in more than 50 federally qualified health center locations throughout Chicago and the surrounding suburbs. Accredited by the Joint Commission, ACCESS serves as the medical home for more than 200,000 patients each year.

- **Mission**

- The mission of ACCESS is to provide outstanding preventive and primary health care, accessible to all in their own communities.



Population



Overview of MCH Program Population

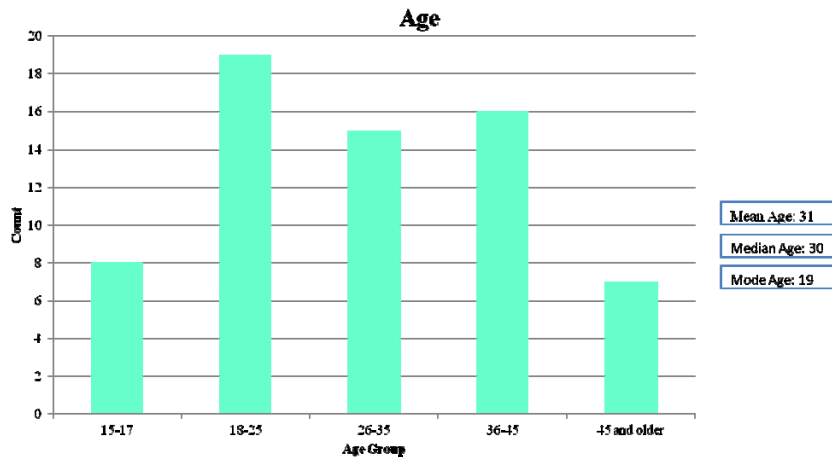
- Currently working with 1,160 pregnant and parenting clients in our maternal child health core services.
- In the most recent report 53 of those clients were pregnant teenagers and 55 were parenting teenagers (not eligible for the program)
- Previous attempts to engage fathers yielded very small results

CPI: Background/Objectives

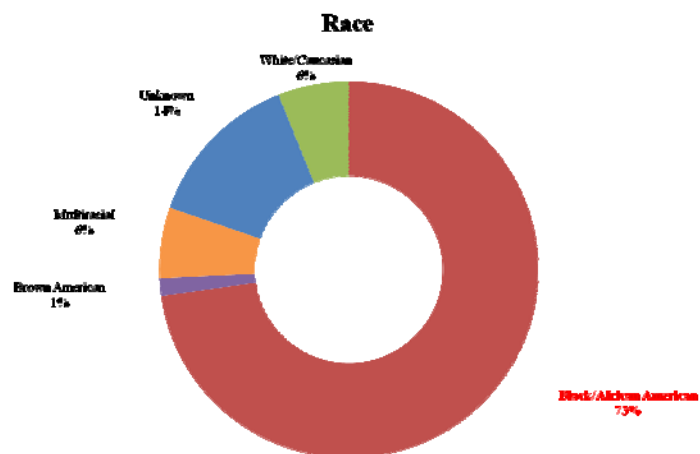
- There are few comprehensive male involvement projects, and even fewer critically evaluated programs.
- A review of 300 community-based fatherhood programs by Levine and Pitt revealed that there is limited evaluation information on the effectiveness of these programs*
- ACCESS conducted a male involvement needs assessment with the male partners of our current maternal and child health program clients.

* Levine, J, Pitt E. New Expectations: Community Strategies for Responsible Fatherhood. New York, NY: Family and Work institute; 1995 as cited in Lu, Michael C. et. Al, Winter 2010

CPI Needs Assessment: Age

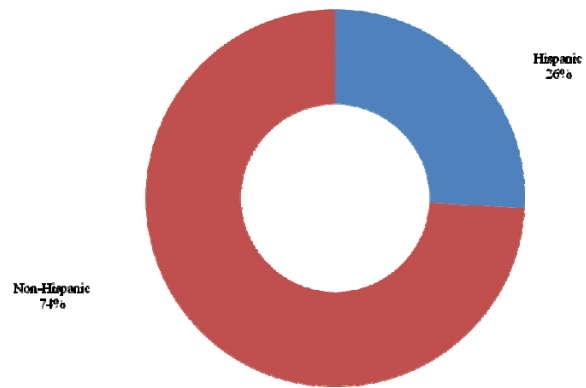


CPI Needs Assessment: Race



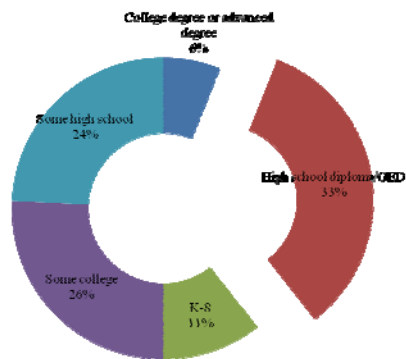
CPI Needs Assessment: Ethnicity

Ethnicity

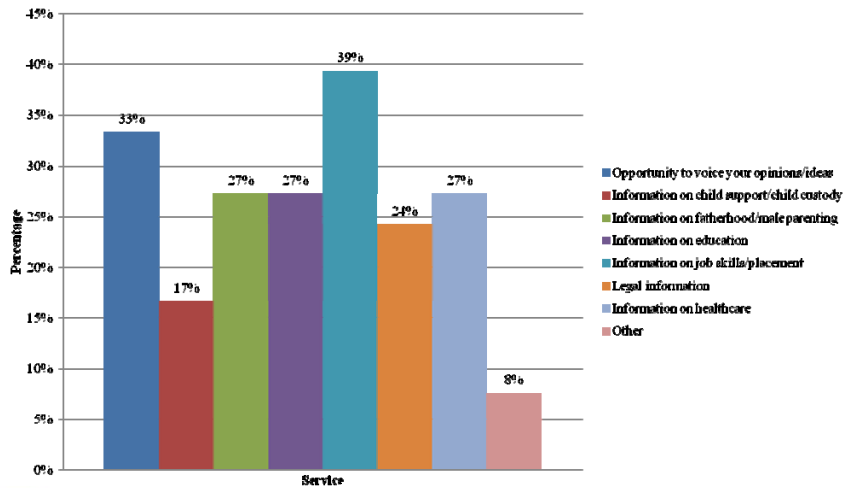


CPI Needs Assessment: Highest Grade Completed

Highest Education Completed



Services Needed To Be More Involved As A Parent



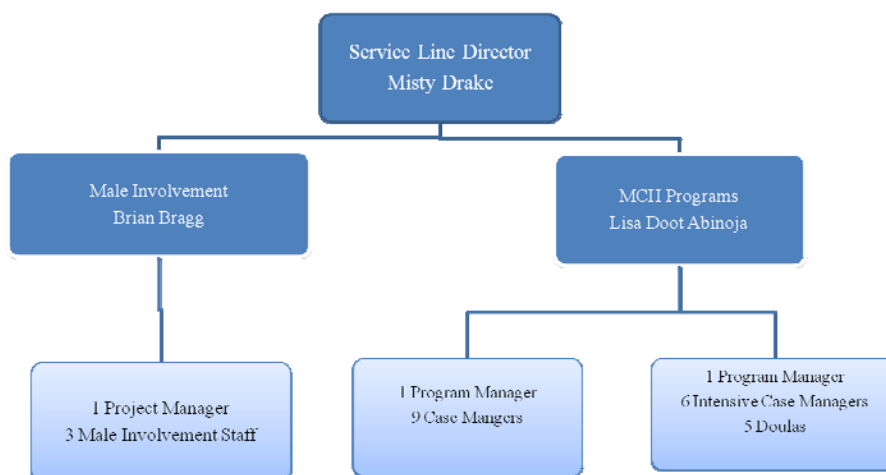
CPI: Needs Assessment

- The CPI program design addresses many of these issues to support greater involvement of fathers in pregnancy and child development outcomes

CPI: Needs Assessment Limitations

- Negative assumptions regarding parental involvement (related wording of assessment questions)
- Possible bias with location of assessment

CPI Project Overview

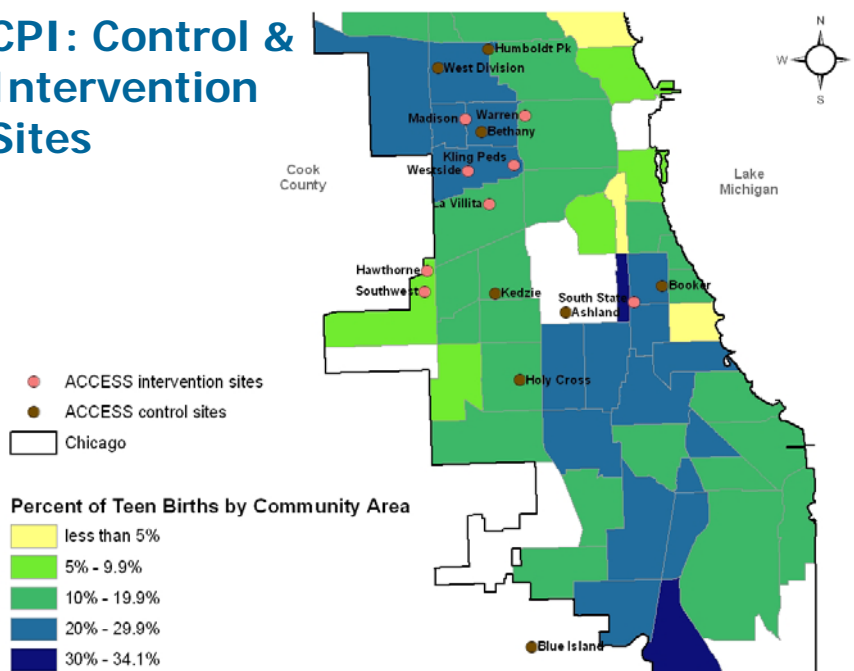


CPI Project Overview

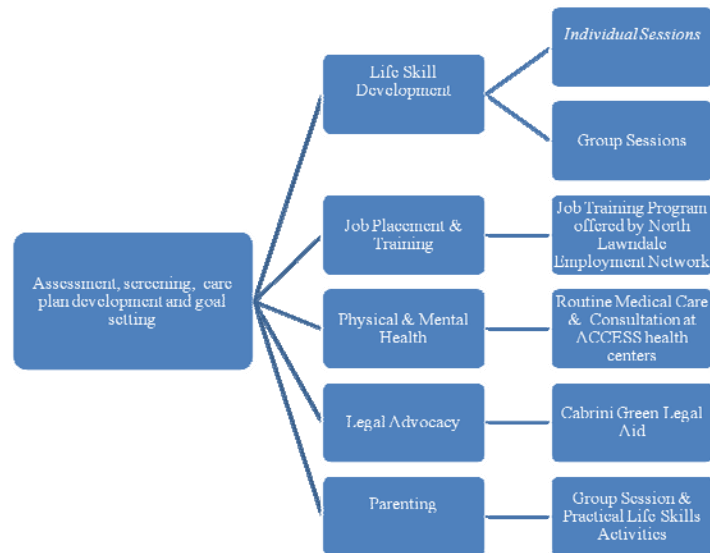
- CPI is a multi-site intervention, comparing pregnant and parenting adolescents and their families receiving core services through care management, with those receiving a male involvement intervention
- Aims to enhance the core services and improve birth, parenting and child development. It will be implemented in 16 ACCESS health centers on the south and west sides of Chicago, IL



CPI: Control & Intervention Sites



CPI: Method

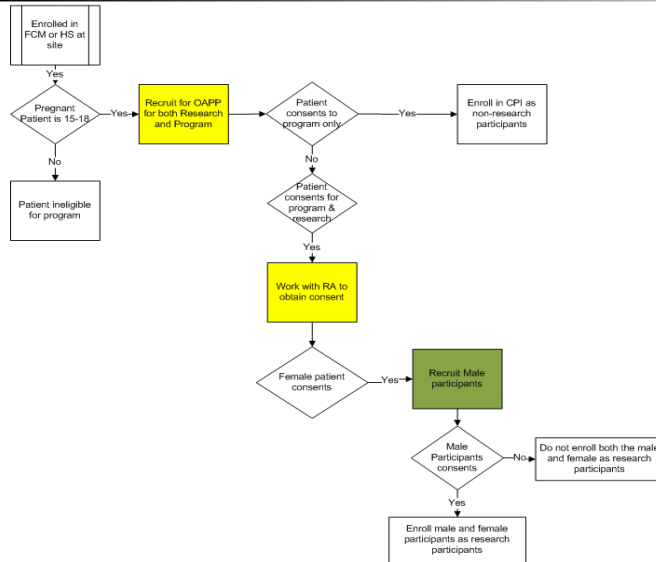


Male Curriculum

- Individual Sessions
 - monthly pre natal
 - Coinciding with well child visits post birth (to 24 months)
- Group Sessions
 - 6 weekly pre/6 weekly post natal; 12 total

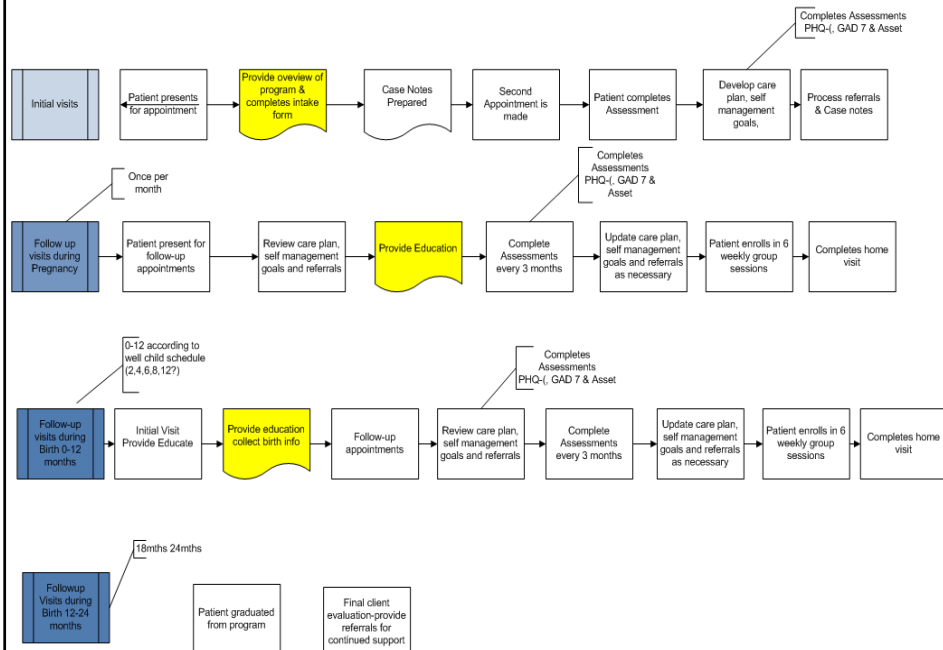
Enrollment & Consent Procedures

CPI Recruitment Workflow: Intervention Group



*Live with Epic
**Live with Epic Summer 2011

CPI Workflow: Intervention



Evaluation

Using both the AFL and supplemental data collection instruments developed by the research and program teams, the following objectives will be assessed:

- *Process Objectives:*
 - Provide maternal and child health core and supplemental services to pregnant and parenting teens.
 - Provide an enhanced male involvement program to the male partners of the teen females.

Evaluation: Outcome Objectives

- Young mothers involved in the CPI intervention demonstration will have a lower subsequent pregnancy rate.
- 80 percent of young mothers will be up-to-date on their immunizations at 12 months.
- 80 percent of young mothers involved in the CPI demonstration model will have higher rates of school retention, graduation (and/or completion of GED).

Evaluation: Outcome Objectives

- 75 percent of males involved in the CPI intervention demonstration program will report that they have a job or are enrolled in school or a job readiness program.
- Males involved in the CPI intervention demonstration will be twice as likely to have better parental engagement compared to the comparison group at one year after the delivery of their children.
- 75 percent of males involved in CPI intervention demonstration program will attend an annual medical visit.

Implementation

- Research protocols approved for Program Evaluation August 15.
 - The number of intervention and control sites, and scope of services for this vulnerable population, constituted a very unique research protocol review for our institutional partner.

Process Design

- Research conducted on the development process of the program concluded with the following recommendations:
 - Monitor the integration of program services focused on addressing social determinants of health with the traditional clinical services offered at ACCESS.
 - Recognize the varied staff understandings of the service and research components may lead to misunderstandings.
 - Monitor recruitment and case management loads to understand resource needs and the potential for realignment of resources in the health centers. This may also serve future program planning, development and implementation at ACCESS.



Questions?

- Brian Bragg
brian.bragg@accesscommunityhealth.net
- Lisa Doot Abinoja
elisabeth.doot@accesscommunityhealth.net

