

# Reactions to Race

Results from the 2005 Franklin  
County Community Health Risk  
Assessment



Office of Assessment  
and Surveillance

## Reactions to Race

- Six questions developed by Dr. Camara Jones, research director on Social Determinants of Health at the CDC
- Used on the Behavioral Risk Factor Surveillance System survey
  - Piloted in 2002
  - Optional module

## States using Reactions to Race

Arkansas		2004			
California	2002				
Colorado		2004			
Delaware	2002	2004	2005		
District of Columbia		2004			
Florida	2002				
Michigan				2006	
Mississippi		2004			
New Hampshire	2002				
New Mexico	2002				
North Carolina	2002				
Ohio		2003		2005	
Rhode Island			2004		2007
South Carolina		2003	2004		
Wisconsin			2004	2005	2006

## 2005 Reactions to Race Questions

- How do other people usually classify you in this country?
- How often do you think about your race?



## 2005 Reactions to Race Questions

- Within the past 12 months at work, do you feel you were treated worse than other race, the same as other races, better than other races, or worse than other races, but better than others?



## 2005 Reactions to Race Questions

- Within the past 12 months when seeking health care, do you feel your experiences were worse than other race, the same as other races, better than other races, or worse than other races, but better than others?



## 2005 Reactions to Race Questions

- Within the past 12 months on average, how often have you experienced any physical symptoms, for example a headache, an upset stomach, tensing of your muscles, or a pounding heart, as a result of how you were treated based on your race?



## 2005 Reactions to Race Questions

- Within the past 12 months on average, how often have you emotionally upset, for example angry, sad, or frustrated, as a result of how you were treated based on your race?

## Survey Details

- Telephone Survey
- January, 2005 thru March, 2006
- Franklin County, Ohio
- N=1315 females age 18 and older

## Reactions to Race

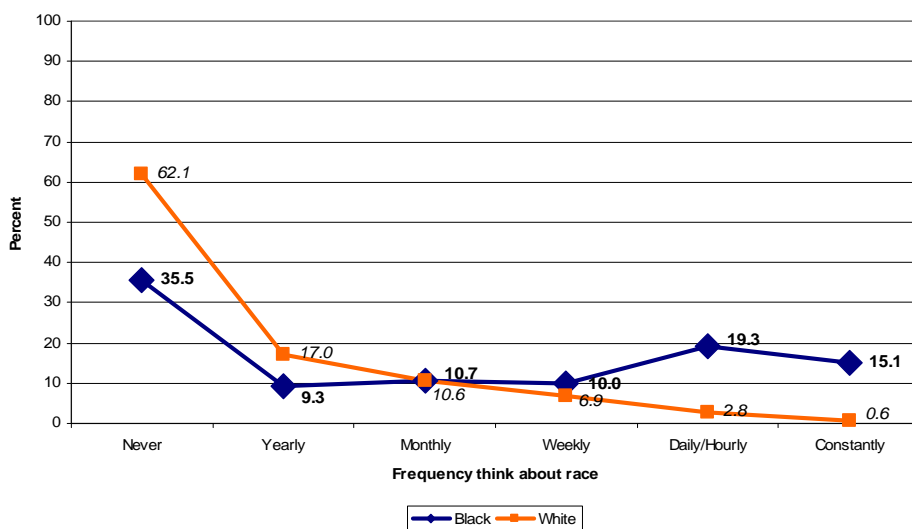
- Dr. Jones looks at socially assigned race
- Franklin County sample
  - Assigned black, N= 311
  - Assigned white, N= 936
  - Assigned Hispanic, N= 19
    - Assigned Hispanic group does not meet BRFSS standards of N=50 and will not be reported

## Two Measures of "Race"

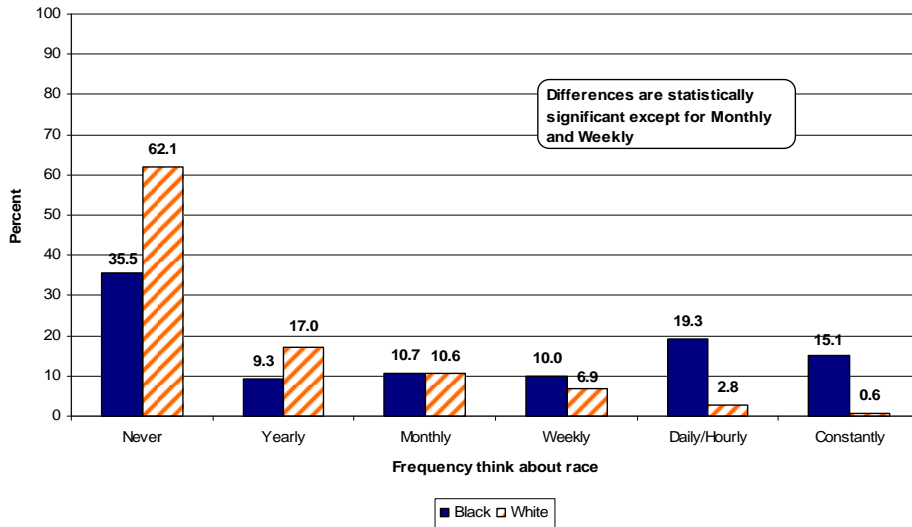
How usually classified by others

		White	Black	Hispanic	Other
How self-identify	White	<b>98.7</b>	0.7	42.7	23.2
	Black	0.1	<b>91.9</b>	2.1	13.4
	Hispanic	0.2	4.8	<b>36.2</b>	1.7
	Other	1.0	2.6	19.1	<b>61.7</b>

## How often think about race

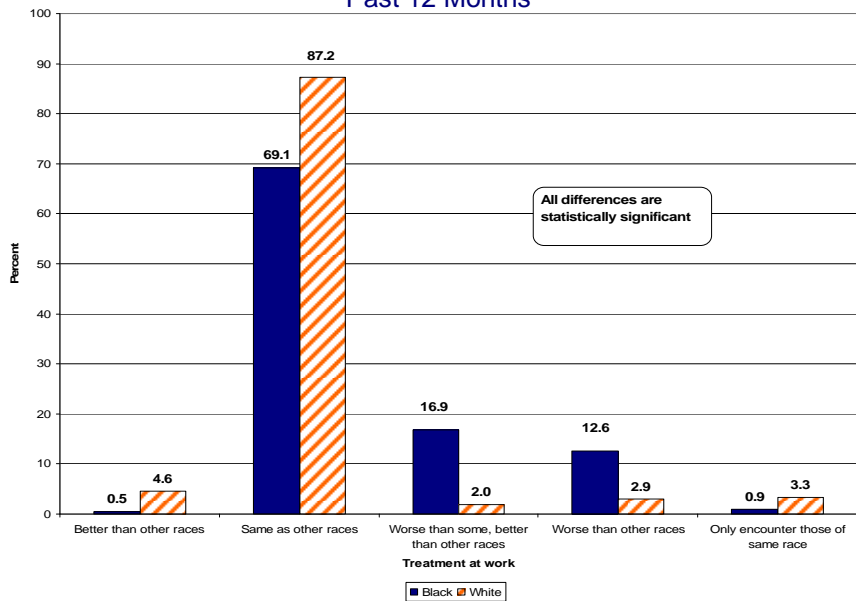


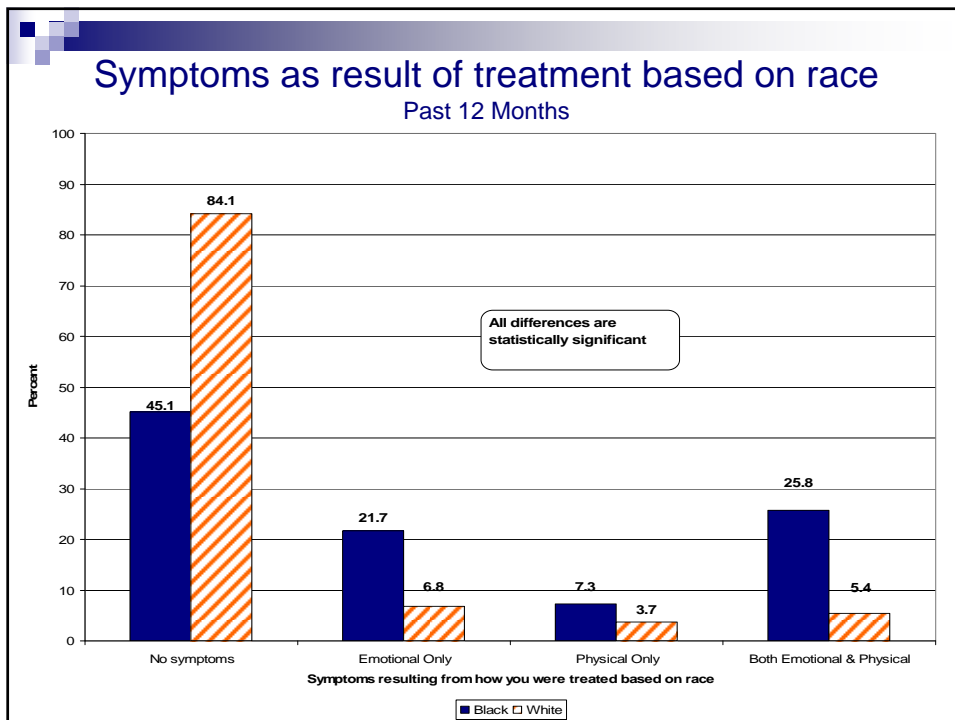
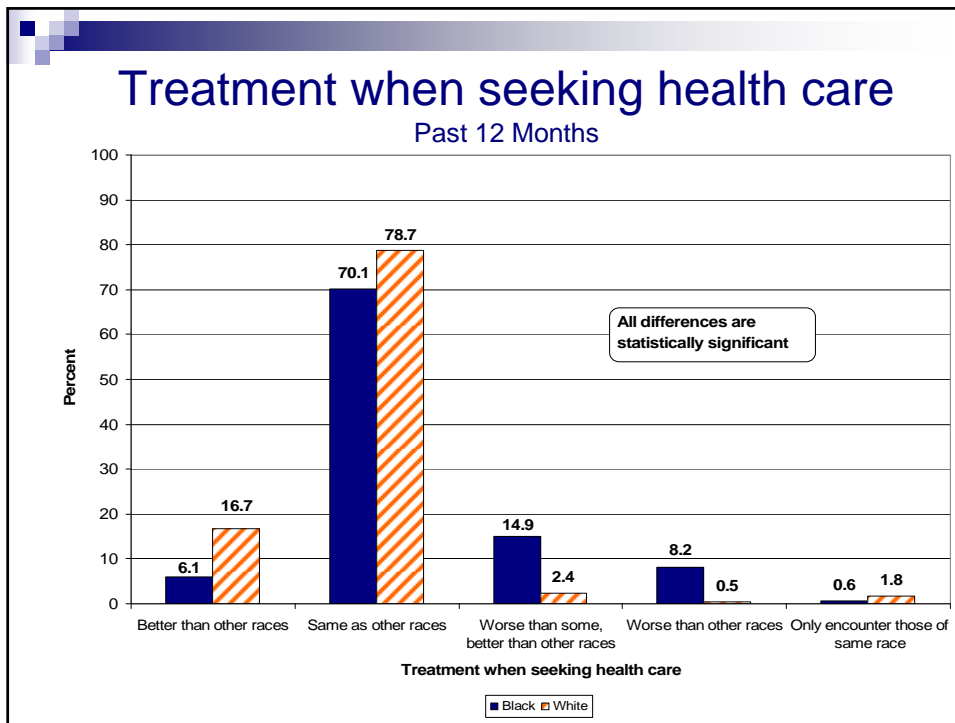
## How often think about race



## Treatment at work

Past 12 Months





## Limitations

- The survey did not reach those without a telephone
- Applies only to Franklin County, Ohio
- Unable to look at women of childbearing age due to sample size and simply looked at all women age 18 and older

## For further information contact:

Suellen Bennett, *msph*  
Office of Assessment and Surveillance  
Columbus Public Health  
[Suellenb@columbus.gov](mailto:Suellenb@columbus.gov)  
614-645-5658